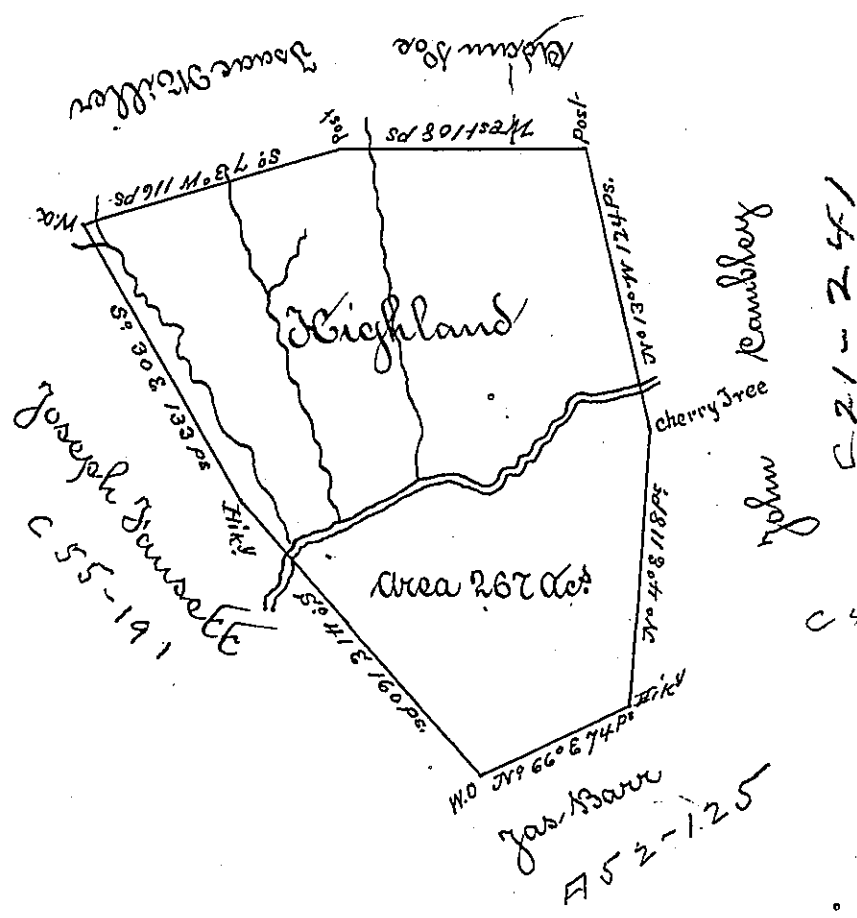


Richd Christ has conveyed to Paul Fleming  
in whose name the patent is to issue  
92412.



A Draught of a survey called Highland lying on Harmon Run in Washington County cont<sup>g</sup> 267 ac. strict measure executed Sept<sup>r</sup> 15<sup>th</sup> 1785 in pursuance of a Certificate in the name of Richd Christ, which in ye authenticated List of Entries is described as lying on ye Monongahela River; the following Certificates will explain the circumstance.

"We y<sup>e</sup> Commis<sup>rs</sup> for adjusting Claims to unpatented Lands in y<sup>e</sup> Counties of Monongalia, Yohg<sup>o</sup> & Ohio do hereby certify that Richd Christ is intitled to 400 ac<sup>s</sup> of Land in Yohg<sup>o</sup> County on Harmon R<sup>o</sup> to include his Settlement made in ye year 1775, also a right in Preemption to One thousand ac<sup>s</sup> adjoining thereto. Given under our hands at Reed Stone Old Fort this 5<sup>th</sup> of Nov. 1779. in ye 4<sup>th</sup> year of ye Commonwealth

Wm James Chew, Ch Com<sup>rs</sup>  
The above Certificate was entered with Col. Wm Crawford, y<sup>e</sup> day & Date above mentioned, which I find entered for Lands on y<sup>e</sup> Monongahela River, but by a Certificate from J<sup>r</sup> Peter Duwall I find it a mistake and that it ought to have been on Harmon R<sup>o</sup> y<sup>e</sup> Richd Christ had but one Certificate on Monongahela River whereas two are recorded. Given under my hand this 8<sup>th</sup> of Sept 1785. Benj Johnston Sur Yohg<sup>o</sup> Court

We have never seen y<sup>e</sup> original Certificate only Benj Johnston  
Pierley Toyvill }  
Walter Ritchie } S. Sur<sup>r</sup>

**IN TESTIMONY** that the above is a copy of the original remaining on file in the Department of Internal Affairs of Pennsylvania, made conformably to an Act of Assembly approved the 16th day of February, 1833, I have hereunto set my Hand and caused the Seal of said Department to be affixed at Harrisburg, this

Seventh day of July 1896.

James W. Latta  
Secretary of Internal Affairs.